

ROUGH TERRAIN CRANE

GR-160N

JAPANESE SPECIFICATIONS

OUTLINE	SPEC. NO.
X-type Outrigger	GR-160N-2-00101

Control No. JA-01

2. Total Rated Loads

2-(1) Outrigger Extension [Boom]

Unit: ton

Outriggers fully extended (5.2 m) -360°-						
Working radius \ Boom length	6.5 m	10.7 m	14.9 m	19.1 m	23.3 m	27.5 m
2.5 m	16.0	12.0	9.0	7.0		
3.0 m	16.0	12.0	9.0	7.0		
3.5 m	14.0	12.0	9.0	7.0	5.0	3.5
4.0 m	12.5	12.0	9.0	7.0	5.0	3.5
4.5 m	11.7 (4.4 m)	11.1	9.0	7.0	5.0	3.5
5.0 m		10.25	8.9	7.0	5.0	3.5
5.5 m		9.4	8.2	7.0	5.0	3.5
6.0 m		8.8	7.6	6.6	5.0	3.5
7.0 m		6.75	6.4	5.8	4.7	3.5
8.0 m		5.3	5.0	5.2	4.15	3.4
9.0 m		4.5 (8.6 m)	4.0	4.3	3.7	3.1
10.0 m			3.25	3.5	3.3	2.8
11.0 m			2.65	2.95	3.0	2.55
12.0 m			2.15	2.45	2.65	2.35
13.0 m			1.8 (12.8 m)	2.05	2.25	2.15
14.0 m				1.75	1.95	2.0
15.0 m				1.45	1.7	1.75
16.0 m				1.25	1.45	1.5
17.0 m				1.05	1.25	1.3
18.0 m					1.05	1.1
19.0 m					0.9	0.95
20.0 m					0.75	0.8
22.0 m					0.6 (21.2 m)	0.6
24.0 m						0.45
A (°)	0-82.5					

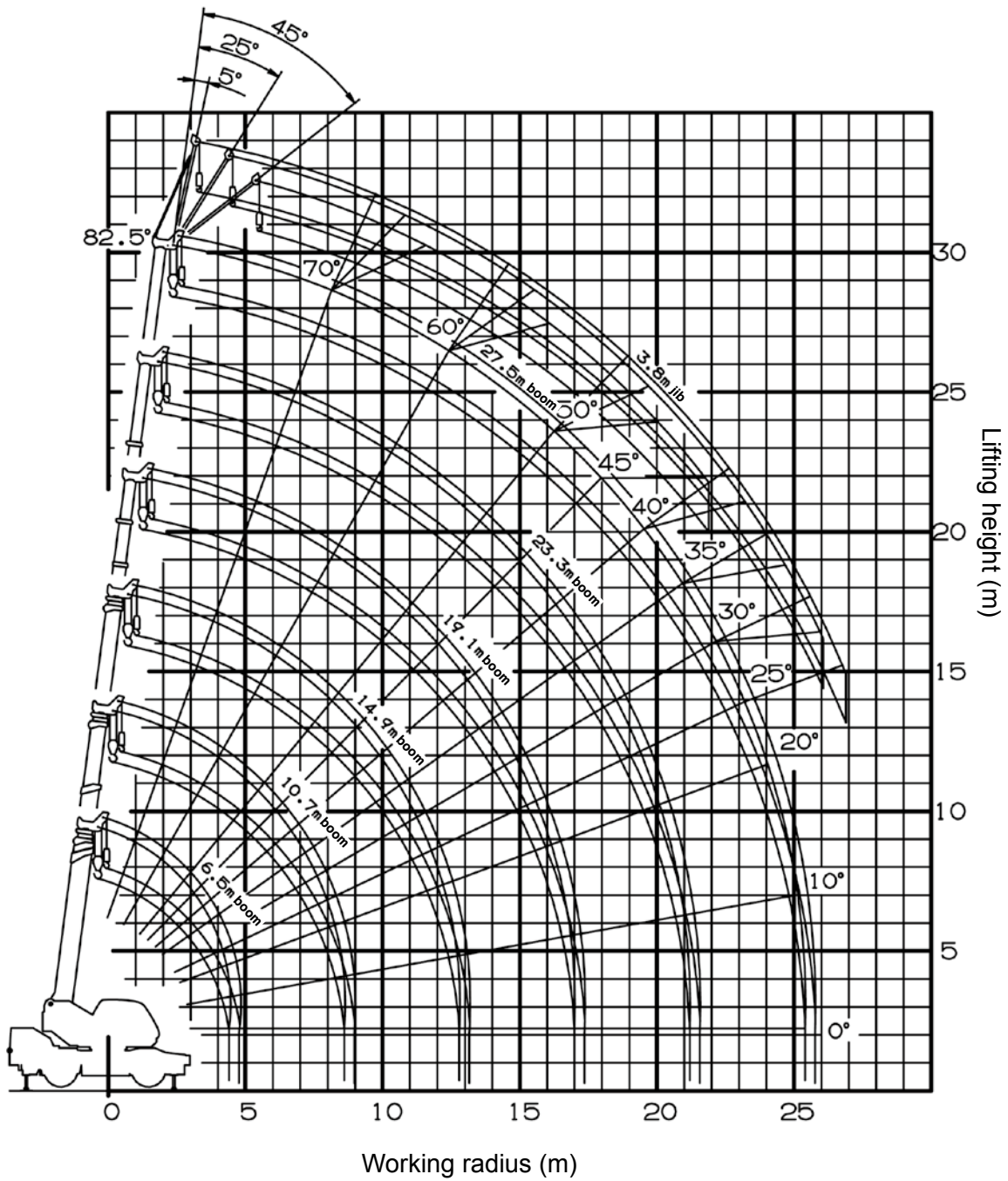
A= Boom angle range (for the unladen condition)

Unit: ton

Outriggers middle extended (4.8 m) -Over sides-						
Working radius \ Boom length	6.5 m	10.7 m	14.9 m	19.1 m	23.3 m	27.5 m
2.5 m	16.0	12.0	9.0	7.0		
3.0 m	16.0	12.0	9.0	7.0		
3.5 m	14.0	12.0	9.0	7.0	5.0	3.5
4.0 m	12.5	12.0	9.0	7.0	5.0	3.5
4.5 m	11.7 (4.4 m)	11.1	9.0	7.0	5.0	3.5
5.0 m		10.25	8.9	7.0	5.0	3.5
5.5 m		9.2	8.2	7.0	5.0	3.5
6.0 m		7.9	7.6	6.6	5.0	3.5
7.0 m		5.85	5.85	5.8	4.7	3.5
8.0 m		4.55	4.5	4.85	4.15	3.4
9.0 m		3.9 (8.6 m)	3.55	3.9	3.7	3.1
10.0 m			2.8	3.15	3.3	2.8
11.0 m			2.25	2.6	2.8	2.55
12.0 m			1.8	2.15	2.35	2.35
13.0 m			1.5 (12.8 m)	1.75	1.95	2.1
14.0 m				1.45	1.65	1.75
15.0 m				1.2	1.4	1.5
16.0 m				1.0	1.2	1.3
17.0 m				0.85	1.0	1.1
18.0 m					0.85	0.95
19.0 m					0.7	0.8
20.0 m					0.55	0.65
22.0 m						0.45
A (°)	0-82.5					24-82.5

A= Boom angle range (for the unladen condition)

3. Working Radius - Lifting Height



Note:

1. The deflection of the boom and jib is not incorporated in the figure above.
2. The figure above shows the crane with the maximum outrigger extension (5.2 m).

4. Dimensions

